

Provence

Land of industry



In the Bouches-du-Rhône department,
an ECO-INDUSTRIAL CLUSTER:

CHEMICALS
PLASTICS PROCESSES
METALLURGY
ENERGY



INDUSTRY

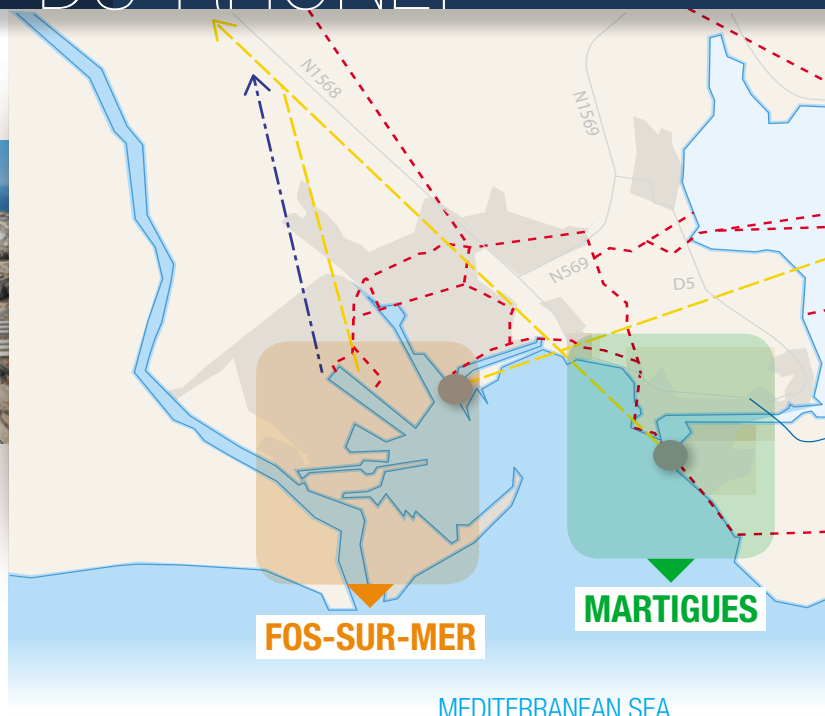
IN THE BOUCHES-DU-RHÔNE:



PIICTO © Collection port de Marseille Fos

LAVERA © Petroineos Manufacturing France SAS

- Gas
- Chemical products
- Petroleum products



PIICTO

IN FOS-SUR-MER

CHARACTERISTICS

1200 ha, 600 of which are available
 Customised parcels from 1000 m² to 100 ha
 1700 linear metres of existing docks
 Draughts of up to 18 m
 200,000 to 400,000 volts electricity
 80 to 1000 mm diameter gas lines
 300 to 800 mm diameter water lines for industrial use
 Drinking water, fibre optics, ADSL telecom
 Steam system planned, high threshold SEVESO Classification

COMPANIES PRESENT

AIR LIQUIDE - ASCO INDUSTRIES - VICAT FOS - CARFOS / SEA INVEST
 COMPAGNIE NATIONALE DU RHONE - COVESTRO - ELENGY / ENGIE - EVERE
 ENGIE THERMIQUE FRANCE - PORT DE MARSEILLE FOS - JEAN LEFEBVRE
 MEDITERRANEE - KEM ONE - LYONDELLBASELL - SOLAMAT MEREX

The INNOVEX innovation platform:

Within PIICTO, a 12 ha site has been devoted to pre-industrial pilots associated with the energy transition. Demonstrators must add value to and increase the competitiveness of the clients in the zone and/or lead to the establishment of new industries.

LAVERA

IN MARTIGUES

CHARACTERISTICS

650 ha
 100 ha of land available (Kem One)
 Road access from the A55
 Direct rail access
 Sea access through the port of Lavéra
 Draughts of up to 12 m
 Available utilities/services: steam, gas, water, electricity, waste treatment plant,
 Safety, security, after-sales, medical, and restaurant services
 High threshold SEVESO Classification

COMPANIES PRESENT

APPRYL, GEXARO, KEM ONE, INEOS, LAVERA ENERGIE, NAPHTACHIMIE,
 OXOCHIMIE, PETROINEOS

One of the most modern refineries in France:

Annual processing capacity: 10 million tons of crude oil. Highly flexible, allowing it to produce a diversified range of petroleum products used by consumers, industry, and transport. The chemical plant downstream from the refinery produces basic materials for the chemical industry.

82 500
 INDUSTRIAL JOBS
 ACROSS ALL SECTORS COMBINED

80 COMPANIES
 50%
 OF WHICH ARE FOREIGN CAPITAL

17
 OF THE POPULATION
 INDUSTRY IN THE
 THE 4 PL

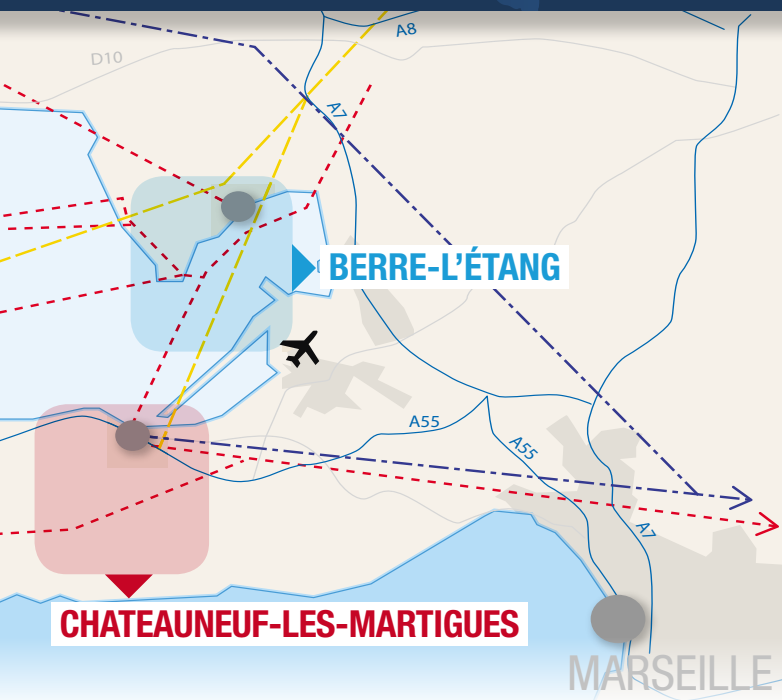
28 EUROPEAN COUNTRIES
TOTAL 500 MILLION CONSUMERS

LONDON
PARIS
MARSEILLES

AMSTERDAM
GENOVA

IN THE HEART OF A MARKET
OF 810 MILLION CONSUMERS

SOUTH AND EAST MEDITERRANEAN
COUNTRIES: TOTAL 310 MILLION CONSUMERS



La Mède © D.R.



Industrial cluster in Berre @ LYONDELLBASELL

LA MEDE

IN CHATEAUNEUF-LES-MARTIGUES

CHARACTERISTICS

250 ha with available land
Available utilities (water, steam, electricity, gas)
Available services (HSEQ, maintenance, Inspection, Purchasing, etc.)
A Training Centre open to everyone for the refining / chemicals / exploration-production sectors
Production capacity of 500,000 T/year of HVO (hydro-treated vegetable oil)
1.3 million m³ of storage capacity
Access: maritime / road / rail / pipelines
High threshold SEVESO Classification

COMPANIES PRESENT

TOTAL AND MORE THAN 70 SERVICE COMPANIES ACROSS ALL TRADES

INDUSTRIAL CLUSTER

IN BERRE-L'ETANG

CHARACTERISTICS

750 ha, 120 ha of which are available
Direct rail access
Direct access to major auto routes (A7/A54/A8)
Opposite the airport
Sea access through the Port of La Pointe
Draughts of up to 6.80 m
Available utilities: steam, gas, electricity, water, waste treatment plant, Safety, security, after-sales, and medical service
High threshold SEVESO Classification

COMPANIES PRESENT

LYONDELLBASELL, KEM ONE, KRATON, INFINEUM, SN2A

A bio-molecule production refinery:

TOTAL has invested more than €275M to transform its plant into the first French bio-refinery of a global scale. Thus, as part of the energy transition, TOTAL plans to meet the increasing demand for Bio fuels. TOTAL is also implementing a voluntary economic development plan for the Fos-Étang de Berre zone.

An economic and industrial platform covered by a revitalisation plan:

For all industrial projects, a revitalisation plan offers attractive terms for establishment.

%

ION IS ACTIVE IN
E AREA AROUND
ATFORMS

€275 M

TOTAL LA MÈDE INVESTED
TO CREATE THE FIRST FRENCH
BIO-REFINERY BY 2018

MORE THAN 300

MARKET-LEADING
SUBCONTRACTORS



IS YOUR **BUSINESS**

IN UPSTREAM OR DOWNSTREAM SYNERGY WITH THESE SECTORS:

■ **Eco-industry:**

- Producers and processors of biosourced molecules
- «Green» energy producer
- Energy storage
- «Power to gas» and «power to liquid» sectors
- CO₂ recovery and recycling
- Recycling of industrial waste and products at the end of their lifecycle

■ **Traditional activities in the zone:**

- Metallurgy
- Petrochemicals and refining
- Synthetic chemistry, fine and speciality chemicals
- Materials sector
- Traditional energy producers

■ **New activity sectors in the zone:**

- Pharmaceuticals
- Cosmetics
- Agri-food sector

THE INDUSTRIAL **ENVIRONMENT:**

- Direct access to all four platforms **by rail, sea, road, barge, and pipeline.**
- Port de Marseille Fos (Marseille-Fos Major Sea Port) **with 80 million tons of freight** (regular connections with 458 ports in 158 countries).
- An international passenger and freight airport, **100 regular destinations in 33 countries.**
- A river port at Arles (450,000 tons of freight/year).
- More than 800 hectares available including **600 on the PICTO Platform in Fos-sur-Mer.**

BY CHOOSING LA PROVENCE INDUSTRIELLE

You have access to a network of 4 interconnected platforms that are open to Europe through oil and gas pipelines.

One of the highest density networks in France offering:

- **The largest industrial site**
- **One of the largest** wharf aprons in Europe
- **Connection to the major platforms** in Europe
- **The largest** storage capacity
- **The highest** steam pressure at one of the lowest costs in Europe
- **A diversified offering** of raw materials



TO ASSIST YOU WITH YOUR PLAN:

Provence Promotion an agency dedicated to assisting productive investments, has been authorised by the industrial platforms of Provence to work with companies wishing to establish their business.

Provence promotion and its partners
can provide free, confidential assistance.

PROVENCE PROMOTION CAN ASSIST YOU WITH ALL STAGES OF YOUR PROJECT:

MOBILISING THE ECONOMIC AND RESEARCH ECOSYSTEM

to help you achieve your objectives

CREATING THE CONDITIONS

for your project to succeed

OFFERING MOBILITY

for your employees

PROMOTING YOUR COMPANY

in the region

PROVENCE
PROMOTION

PROVENCE PROMOTION

Agence de développement économique / Economic Development Agency
Les Docks - Atrium 10.5 - 10, place de la Joliette
CS 45607 - 13567 Marseille cedex 02 - France
Tél. : **33 (0)4 96 11 60 00** Fax : 33 (0)4 96 11 60 11

www.investinprovence.com

In partnership with

