



LIVING & WORKING **in** PROVENCE

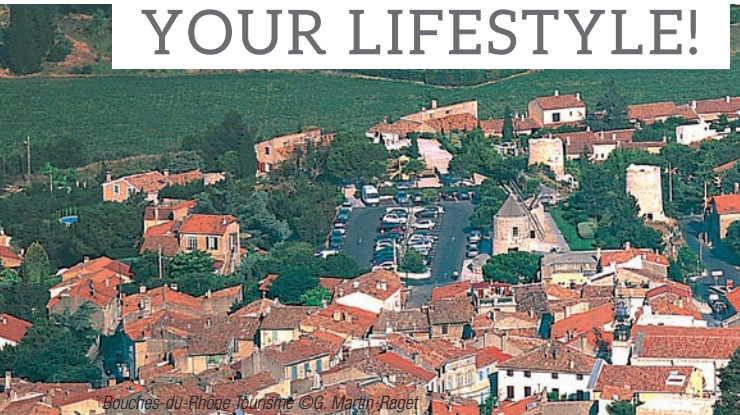
Technopôle Marseille-Provence Château-Gombert

A real melting pot of innovation, the Technopôle Marseille-Provence is a great place to live and encourages a certain way of life typical to Provence. Here, high technology and Provence traditions live happily side by side.



ARE YOU GOING TO BE WORKING AT THE T

CHOOSE YOUR LIFESTYLE!

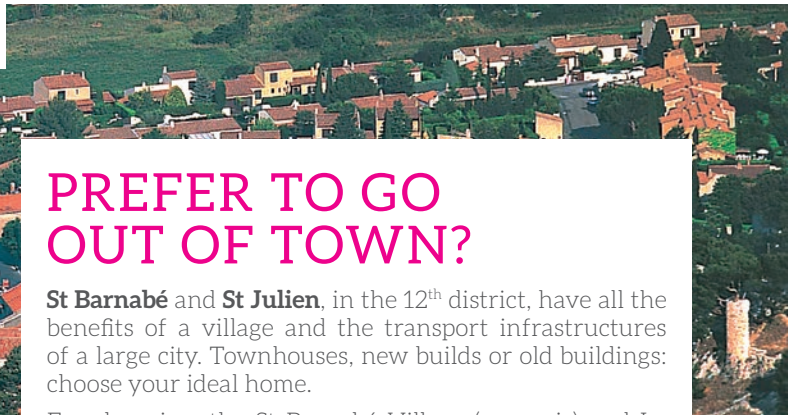


Bouches-du-Rhône Tourisme © G. Martin-Raget

ARE YOU A CITY PERSON?

Culture, hip nights out, shopping: **Marseille city centre** has it all. You will undoubtedly find the apartment of your dreams in a Hausmannian building or one of the many new developments. Your workplace is just a stone's throw from several metro stations.

Want culture? Visit MuCEM (Musée des Civilisations de l'Europe et de la Méditerranée), or go to the movies or the opera. Shopalcoholics can head to the Centre Bourse, which has 76 shops, or the Terrasses du Port, which, as well as its 190 shops and restaurants, has a breathtaking 260 m terrace overlooking the sea.



PREFER TO GO OUT OF TOWN?

St Barnabé and **St Julien**, in the 12th district, have all the benefits of a village and the transport infrastructures of a large city. Townhouses, new builds or old buildings: choose your ideal home.

For shopping, the St Barnabé Village (open-air) and La Valentine shopping centres have everything you could wish for.

Movie lovers will love the Château de la Buzine, bought by Marcel Pagnol in the 1940s and now a cultural hotspot. It offers film screenings as well as exhibitions and jazz nights.

DO YOU PREFER THE COUNTRYSIDE?

Live in **Allauch**, a small town steeped in Provence traditions, or the **Château-Gombert** neighbourhood, a village in the heart of Marseille. RTM buses make it very easy to get to the Technopôle.

Nature lovers can go walking in the Massif de l'Etoile. The peaks offer magnificent views of Marseilles harbour, Sainte-Victoire and Sainte-Baume.

If you need a bit of culture, the Merlan theatre, a «National Stage», offers an eclectic programme. The more traditional Musée du Terroir Marseillais puts on classical concerts and conferences on the history of Marseilles.



www.investinprovence.com

TECHNOPÔLE MARSEILLE-PROVENCE ?

Going to work

The site is served by the Métro (line 1) and the «high service level» bus (BHNS), which stops in the heart of the technopôle and serves the new residential areas.

Medical services

The second largest healthcare cluster in France, Marseille has one of the best healthcare services available nationally.

The four APHM hospitals are supplemented by top-level private healthcare establishments such as the Hôpital Européen, which opened in August 2013.

The Hôpital Nord and the Hôpital Militaire de Lavérans are near to Château-Gombert. Within the Technopôle itself, the Fresnel service hub has a medical centre (GP, dentist, ophthalmologist, etc.).

“Marseille has always attracted very good doctors,”

*Pr Yves Baillet,
Chairman of Marseille's
Medical Heritage
Conservatory*

A GUIDE TO THE TECHNOPÔLE



©MPM

Accommodation Rental rates

Location	One-bedroom apt.	Two-bedroom apt.	House
City centre - Close to Old Port	€420-450 incl. fees	€650-850 incl. fees	Unavailable
St Barnabé	€570-650 incl. fees	€750-995 incl. fees	€1,300-1,700 incl. fees
Château-Gombert	€590-750 incl. fees	€860-960 incl. fees	€1,100-1,300 incl. fees

A few purchase prices

Two-bedroom apartment in La Joliette area in a new-build complex: **From €177,500**

Two-bedroom apartment in Château-Gombert area in a new-build complex: **From €196,000**

House in St Barnabé area in a new housing unit: **From €315,400**



Rental rates and prices are not contractual and are provided as guide only



Golf de la Salette © PP

Lunch near your workplace

The Technopôle and the village of Château-Gombert have everything you could want in terms of catering: pizzerias, sandwich shops, restaurants, salad bars and cafés: the choice is yours! You can also get meals delivered to you at work.

Sports

As well as the traditional offering of sports clubs (gym, weights, dance, etc.), the Technopôle has tennis courts that are available for anybody to use.

The Massif de l'Etoile also has several equestrian centres, as well as the Golf de la Salette and Allauch golf courses, each offering spectacular views of the Garlaban massif and the city of Marseille.

Did you know?

The Technopôle is home to the Ecole Centrale Marseille's FabLab, which gives people an initiation in technology. The Fablab is a workshop consisting of computer-operated machine tools designed for everyone: entrepreneurs, students, artists, tradesmen, businesses, etc. Thanks to simplified computer interfaces, it is easy for non-specialist users to design and create their own objects!

Everyday life

At the Technopôle, the Fresnel and Julery service hubs are home to a car garage, beauty salons and local businesses: newsagent, chemist, bakery, wine shop, beauty salon, hairdresser, recreational workshops for children, paramedic centre, etc. and a complete school circuit for your children, from the childcare center right through to engineering school.

DO YOU HAVE CHILDREN?

From nursery to high school



In Marseille (in the St Barnabé, St Julien and Château-Gombert neighbourhoods and in the city centre) and in Allauch, you will find¹:

- **29** DAYCARE CENTERS
- **17** MIDDLE SCHOOLS
- **77** PRESCHOOLS AND ELEMENTARY SCHOOLS
- **12** HIGH SCHOOLS

International sections, in which some classes are taught in a foreign language, have opened in several middle and high schools in Aix-en-Provence (German and English), in Marseille (German, English, Arabic, Spanish and Italian) and in Les Pennes Mirabeau (English).

- AMU (Aix-Marseille University): **the largest university in the French-speaking world**
- Wide-ranging and multidisciplinary education options that encompass all disciplines:
 - > The arts, humanities and social sciences
 - > Economics and management
 - > Health care
 - > Sciences and technology
 - > Law
- **A university with a global outlook:** 45 degrees through international partnership arrangements and 10 Erasmus Mundus programs.
- 2013 Shanghai ranking: **in the top 150 universities worldwide** (out of 500) and in the top 6 French universities.
- **IAE Aix** (Aix Marseille Graduate School of Management): **ranked among the 30 best schools of management in the world.**
- **Elite higher education institutions** (Grandes écoles): Arts et Métiers ParisTech (Aix-en-Provence), Centrale (Marseille), Ecole Nationale d'Architecture (National School of Architecture, Marseille), Kedge Business School, Polytech (Marseille), Sciences Po (Aix-en-Provence)...

Whether they're (still) babies or (already) teenagers, rest assured there will be a pre-school, primary and secondary education option to suit your needs.

Higher education

90,000 students (Académie Aix Marseille)

5 large campuses

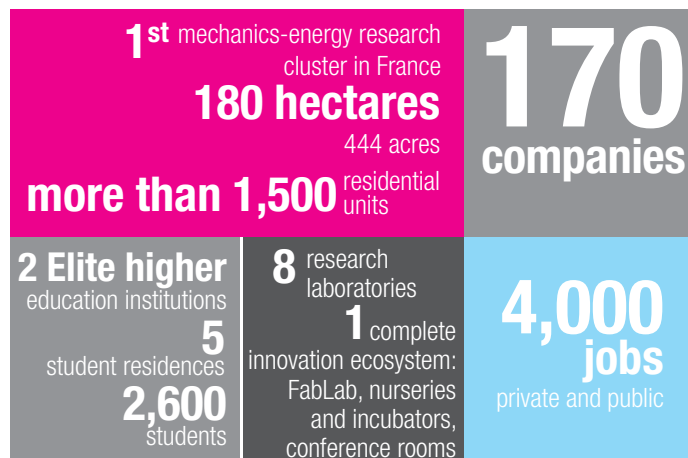
12 post-graduate schools

The Technopôle Marseille-Provence is home to:

the Centrale Marseille and Polytech Marseille engineering schools, Supinfo, the G4 Institute and the Mathematics and Mechanical Engineering departments of Aix-Marseille University

¹- Data is for information purposes only and may be modified in the future

THE TECHNOPÔLE MARSEILLE-PROVENCE KEY FIGURES



"It's not by chance that AKA Optics decided to move into the Technopôle Marseille-Provence Château-Gombert. It's because the Technopôle represents a «hub» of everything that is done in Marseille in terms of technology and that it has the best people in optics and photonics that we chose to set up there.

The site also has a great location and good transport services: the city centre is easy to reach by metro and our clients, who take the TGV or travel by air, can get here quickly. And, last but not least, the environment is extremely pleasant: Château-Gombert is a neighbourhood of Marseille that has grown up around the former village nucleus. The sector, with its strong Provence identity and its townhouses, is very popular.



”

Gilles BORSONI,
Director, AKA Optics France

This leaflet was produced by:



Download our welcome brochure
www.investinprovence.com

Companies based AT THE TECHNOPÔLE:

AXA RÉGION SUD-EST - BULL - CAPSUM - CMR (CONTRÔLE MESURE RÉGULATION) - COOPER DB3 - CYBERNÉTIX - ERAS EXOTISMES - IMMOSSOFT - LABORATOIRES BOIRON PROVEPHARM - SERES TECHNOLOGIES - SYNAPSYS TOMMASI INDUSTRIES - XT-VISION... ET DE NOMBREUSES START-UP !



www.technopole-marseille.com



www.marseille.fr

