



# **in** LIVING & WORKING **PROVENCE**

## **Salon-de-Provence and Lançon-de-Provence Business Parks**

Located at the crossroads of the Alpilles regional natural park, the Crau and the Region of Salon-de-Provence and Lançon-de-Provence, the business parks enjoy a privileged framework north of the Etang de Berre. Between scrub land, pine forests and olive groves, there are multiple choices of nearby residential locations: charming Provencal villages or human size towns 30 minutes from Aix TGV high speed train station.



# ARE YOU GOING TO BE WORKING IN SALON-D

## CHOOSE YOUR LIFESTYLE!



### DO YOU LIKE SMALLER-SCALE CITIES?

**Salon-de-Provence** is a pleasant place to live with its colourful markets for small producers and the outskirts between scrub land, pine trees and olive groves. Famous for its Air Force Academy and its Patrouille de France national air display team, with a jazz musical institute and a more “atypical” education, a school for shepherds. On the banks of the **Etang de Berre**, 30 minutes from the Côte Bleue, Berre l’Etang offers the advantages of a city (sports complex, cinema, swimming pool...) while maintaining the charm of a Provençal city attached to its traditions

### LA PROVENCE, “THE PLACE TO BE!”

### DO YOU DREAM OF A PROVENÇAL VILLAGE?

In countryside lie the charming Provençal villages of **Lançon de Provence** and **Pélissane** on the Massif of Costes, the Massif of **Lamanon** on the edge of the Alpilles and the Massif of Saint-Chamas on the shore of Etang de Berre.

Picturesque markets at Pélissane and Lamanon, a small fishing port and troglodyte houses at **Saint-Chamas**, summer festivities and dynamic associations, these villages will appeal to lovers of the Provençal sweet life.

Do you need a fast connection to an international airport or a high speed train station? **Lançon de Provence** is located 20 minutes by motorway from the Marseille-Provence airport and Aix TGV train station.



[www.investinprovence.com](http://www.investinprovence.com)

# LANÇON-DE-PROVENCE AND LANÇON-PROVENCE ?

## A GUIDE TO THE BUSINESS PARKS

### Going to work

Via the A54, A7 and A8 highways or by a network of regular TER bus stations. The new station at Salon-de-Provence has a multi modal hub accessible by train, bike and bus.

### Medical Services

The second health care cluster of France, the hospitals of Aix-en-Provence (762 beds) and Marseille (3400 beds) are located close to the business parks and have one of the best medical service offers at the national level. Aix-en-Provence has the hospital centre of Pays d'Aix Marseille, a 780-bed public facility, a 200 bed multidisciplinary private clinic and a polyclinic renowned for its surgical unit.

### Accommodation Rental rates

Geographical sectors	T2	T3	House
Salon-de-Pce	€ 500-650 IC	€ 550-700 IC	€ 700-1000 IC
Pélissane / Saint-Chamas	€ 465-730 IC	€ 700-1000 IC	€ 630-1130 IC
Lamanon	€ 470-650 IC	€ 580-820 IC	€ 850-920 IC
Berre l'Etang	€ 490-790 IC	€ 560-850 IC	€ 630-900 IC

### A few purchase prices

T2 apartments in Lançon-de-Provence  
**from € 135,000**

T3 apartments in Saint-Chamas **from € 119,000**

Detached house in Pélissane with 4 bedrooms  
and a small garden **from € 300,000**



Rental rates and prices are not contractual  
and are provided as guide only.





## Lunch near your workplace

Close to the business parks and in the city centres of Salon, Saint Chamas and Berre l'Etang, you will be spoiled for choice: Provençal family cuisine, fast food (take away or delivered), gourmet restaurants, tapas bars, pizzerias, brasseries...

## Sports

Fitness clubs, complex sports at Berre l'Etang, Lancon or Salon, tennis courts and a pool at 10 minutes by foot from Gandonne business park, stadium or parks for running... multiple sports activities are close to your workplace. Not to mention outdoor surroundings for your weekends with a wide range of activities: mountain biking, hiking on the GR2013 or in the Camargue natural regional park, sailing on the Côte Bleue at the Mediterranean sea or from the marina at Berre l'Etang or Saint Chamas...

## Shopping

Shopping centres and malls abound around the business parks. Shopaholics will be happy to discover in 2017 the Village des Marques at Miramas with around a hundred factory outlets offering year-round brands at discounted prices. To be sure to find all you need, head to Plan de Campagne at about 30 minutes from Salon by highway, the largest commercial area of France offers more than 400 brands. The icing on the cake: it's open on Sundays!

# DO YOU HAVE CHILDREN?

## From nursery to high school



Among the cities of **Salon-de-Provence, Lançon-de-Provence, Pélassane, Lamanon, Saint-Chamas, Berre l'étang**, you will find:<sup>1</sup>

- **14** CHILDCARE CENTRES,
- **28** PRESCHOOLS,
- **34** ELEMENTARY SCHOOLS,
- **8** MIDDLE SCHOOLS,
- **7** HIGH SCHOOLS.

International sections, in which some classes are taught in a foreign language, have opened in several middle and high schools in Aix-en-Provence (German and English), in Marseille (German, English, Arabic, Spanish and Italian) and in Les Pennes Mirabeau (English).

- AMU (Aix-Marseille University): **the largest university in the French-speaking world**
- **Wide-ranging and multidisciplinary education** options that encompass all disciplines: The arts, humanities and social sciences, economics and management, health care, sciences and technology, law.
- **A university with a global outlook:** 45 degrees through international partnership arrangements and 10 Erasmus Mundus programs.
- IAE Aix Marseille Graduate School of Management : **in the top of 30 best Graduate Schools of Management in the world**<sup>2</sup>.
- **Elite higher education institutions :** Centrale (Marseille), Ecole Nationale d'Architecture de Marseille (National School of Architecture), Kedge Business School, Polytech (Marseille), IAE, Sciences Po...

<sup>1</sup>- Data is for information purposes only and may be modified in the future

<sup>2</sup>- Financial Times 2013 Ranking

Whether they're (still) babies or (already) teenagers, rest assured there will be a pre-school, primary and secondary education option to suit your needs.

## Higher education



**90,000**

students (Académie Aix Marseille)

**5** large campus

Post graduates

**12**

2013 Shanghai Ranking:

**IN THE TOP 150 UNIVERSITIES  
WORLDWIDE (OUT OF 500) AND IN THE  
TOP 6 FRENCH UNIVERSITIES.**

# KEY FIGURES

## Crau Business Park (Salon-de-Provence) :

**26**  
companies

**120**  
Hectares

## Gandonne Business Park (Salon-de-Provence) :

**120**  
companies

**44**  
Hectares

## Plaines du Sud Business Park (Saint Chamas) :

**15**  
companies

**17**  
Hectares

## Euroflory Park (Berre l'Etang) :

**45**  
companies

**66**  
Hectares

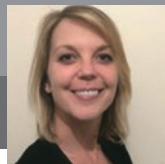
## Companies operating IN THE BUSINESS PARKS:

DHL/ CSF CHAMPION - LA POSTE - WELDOM - ROAD  
AMERICA - Groupe EFINOR - ESAF - POLYSHAPE -  
SCHENKER FRANCE - SUD COSMETICS - TERLAT

"We lived in the Paris suburbs when my husband was transferred in 2010. We didn't think about it for too long, just long enough to find a job for me, that is. I joined him 6 months later. We live in Aix-en-Provence; I work in Salon-de-Provence: just 25 minutes from door to door. Paradise!

No traffic jams except on Friday nights in the summer with the coming and going of holidaymakers but in these cases I take the small country roads. We certainly made compromises on our salaries but we have, without a doubt, gained in quality of life. We no longer have to deal with the daily grind! Life is easier here, less stress, more sun and nature, in the evening after work we are off to the beach.

We always have beach towels, swim wear and petanque balls in the trunk of the car!



**”**  
Elodie CHARPENTIER,  
Marketing & Communication Manager  
Groupe TERLAT

This leaflet was produced by:

**PROVENCE**  
PROMOTION

AIX  
MARSEILLE  
PROVENCE

CCI MARSEILLE  
PROVENCE

Download our welcome brochure  
[www.investinprovence.com](http://www.investinprovence.com)

